

TENDER BULLETIN

NO. 08 OF 2024/2025 FY
REF: 10/3/6/5

24 MAY 2024



LIMPOPO

PROVINCIAL GOVERNMENT
REPUBLIC OF SOUTH AFRICA

This document is also available on the following website:
www.limtreasury.gov.za

Provincial Supply Chain Management Office

TABLE OF CONTENTS

	Page No.
1. REPORTING FRAUDULENT AND CORRUPT ACTIVITIES	3
2. INSTRUCTIONS.....	4
3. BIDS INVITATIONS	05
4. CANCELLATIONS	06
5. AWARDED OF BID.....	07
6. GENERAL NOTICE	08
ANNEXURE 1: ADDRESS LIST AND CONTACT DETAILS: PROVINCIAL DEPARTMENTS.....	09 - 10
ANNEXURE 2: ADDRESS LIST AND CONTACT DETAILS: PUBLIC ENTITIES	11 - 12
ANNEXURE 3: ADDRESS LIST AND CONTACT DETAILS: PROVINCIAL TREASURY SCM CLIENT	
SUPPORT CENTRES	13
7. SELF REGISTRATION PROCESS.....	14

REPORT

FRAUDULENT & AND CORRUPT ACTIVITIES IN THE GOVERNMENT PROCUREMENT SYSTEM

National Anti-Corruption @ 0800 70//zzz1 701

Security and Investigating Services – Limpopo Provincial Treasury @ 015 298 7196

ALL COMPLAINTS/CONCERNS RELATED TO SCM NON-COMPLIANCE MUST BE REPORTED TO:

LIMPOPO PROVINCIAL TREASURY

PRIVATE BAG X 9486

POLOKWANE

0700

PROVINCIAL TREASURY, FINANCE HOUSE, 56 – 58 PAUL KRUGER STREET, POLOKWANE

2. INSTRUCTIONS

1. Bidders are advised to read the entire tender bulletin.
2. Tenders for procurement of supplies, services and disposals are categorized as follows:

SUPPLIES

- Accommodation, leasing of
- Audio visual equipment
- Building material
- Chemicals: Agricultural/Forestry/
- Laboratory/Water Care
- Clothing/Textiles
- Computer equipment
- Computer software
- Electrical equipment
- Electronic equipment
- Furniture
- General
- Medical
- Office equipment: Labour-saving devices
- Perishable provisions
- Stationary/printing
- Steel
- Timber
- Vehicle (all types)
- Workshop equipment

SERVICES

- Building
- Civil
- Electrical
- Functional (including cleaning-, and security services)
- General
- Maintenance of electrical, mechanical
- Equipment and plumbing
- Mechanical
- Professional
- Repair and maintenance of vehicles
- Transport

DISPOSALS

- Clothing and textiles
- Furniture
- General
- Scrap metal
- Vehicles

3. Bid documents are generally available in English only.
4. The address where a bid document is available from and where it must be submitted to may differ.
5. The addresses at which bid documents may be obtained and tenders must be posted appear in Annexure 1.
6. The address list of various Supply Chain Management Advice Centers at which bid documents and tender bulletins may also be obtained, appears in Annexure 3; and
7. The address list of Supply Chain Management satellite offices at which tender bulletins may also be obtained, appear in Annexure 4.

3. BID INVITATIONS

BID NO.	DESCRIPTION OF SERVICE OR SUPPLIES	CONTACT DETAILS	BID DOCUMENT PRICE (NON-REFUNDABLE)	DUE AT 11H00	BID DOCUMENTS OBTAINABLE FROM	POST OR DELIVER BIDS TO (See Annexure 1 & 2)
LTA001-24/25	<p>Appointment of a Project Management Service Provider for the National Tourism Career Expo for a Period of 3 years (2024-2026).</p> <p>Compulsory Briefing Session Date: 06 June 2024 Time: 10:00 Venue: LTA Head Office</p> <p>LTA</p>	<p>Bidding process Ms. Sewela Nyaka @ 066 039 0295</p> <p>Technical aspects Ms. Modjadji Makoela @ 074 888 2964</p>	N/A	14/06/2024	www.etenders.gov.za	113
PRDP 131/2023-24	<p>Provision of Hygiene services in all Office of the Premier buildings for a period of thirty-six (36) months</p> <p>Compulsory Briefing Session Date: 13th of June 2024 Time: 11H00, Venue: Old Cabinet Boardroom (40 Hans van Rensburg Street, Polokwane, Limpopo Province).</p> <p>NB: Bidders who attended the previous compulsory briefing session on the 09th of May 2024 will be considered, however, bidders are advised to utilise the current bid document since the previous bid document had to be amended</p> <p>OTP</p>	<p>Bidding process Nemuhuyuni E @ 015 287 6278</p> <p>Technical inquiries tenders@premier.limpopo.gov.za</p>	N/A	27 th of June 2024	www.etenders.gov.za	102

4. CANCELLATION**4.1.: OFFICE OF THE PREMIER**

BID NO.	DESCRIPTION OF SERVICE	DATE ADVERTISED	CLOSING DATE	REASON FOR CANCELLATION
PRDP 131/2023-24	PROVISION OF HYGIENE SERVICES IN ALL OFFICE OF THE PREMIER BUILDINGS FOR A PERIOD OF THIRTY- SIX (36) MONTHS	19 April 2024	17 May 2024	Incorrect quantities in the Terms of Reference on page 11 of 36

N.B: The bid was advertised with incorrect quantity in the terms of references. **(TOR versus summary)**

5. AWARDED BIDS

Bid Number	Description of Service	Service Provider	Points Scored	Date Awarded	Award
ACDP 23/11	Rendering of Security Service for Various Sites for all District for Limpopo Department of Agriculture and Rural Development for a Period of Three Years	Kgosi Monene General Services cc MOPANI NORTH	95.38	13/05/2024	R 4 867 680.00
		Nomvula Protection Services (Pty) Ltd WATERBERG WEST	87.16		R 2 848 320.00
		Life at Its Best Enterprise (Pty) Ltd GIYANI DISTRICT OFFICE	93.18		R 1 898 880.00
		Gemini Elements CAPRICORN DISTRICT	95.335		R 5 859 997.56
		Mathabang Trading & Project cc WATERBERG EAST	95.72		R 5 663 685.60
		Mamayila Trading Enterprise MOPANI EAST	98.00		R 8 197 200.00
		Sebatakgomo Security MOPANI WEST	95.36		R 6 027 840.00
		Gee Unit Security & Crime Prevention Unit WATERBERG NORTH	96.36		R 6 027 840.00

6. GENERAL NOTICE

LIMPOPO (SCM CLIENT SUPPORT CENTERS) CSD CALL CENTRE LINES FOR SUPPLIERS

DISTRICT	CALL CENTRE NUMBER	OFFICIAL RESPONSIBLE	TIME
Capricorn	015 291 8521	Ms. Rasilingwana M	07H30 TO 16H30
Mopani	015 812 0256	Mr. Khosa WR	07H30 TO 16H30
Sekhukhune	013 265 1071	Mr. Sehale MS	07H30 TO 16H30
Vhembe	015 962 0014	Mrs. Moshabi A	07H30 TO 16H30
Waterberg	014 717 1376	Ms. Moloi R	07H30 TO 16H30

ANNEXURE 1: ADDRESS LIST AND CONTACT DETAILS: LIMPOPO PROVINCIAL DEPARTMENTS

UNIQUE REF. NO.	BID DOCUMENT REFERENCE	CONTACT DETAILS	DOCUMENTS SOLD AT:	DOCUMENTS DEPOSITED AT
100	DSDP	Tel: 015 293 6000 Fax: 015 293 6211 Website: www.limpopo.gov.za	Department of Social Development , Office No. 57 Ground Floor, 21 Biccard Street POLOKWANE	Deposited in the box located at the Department of Social Development, 21 Biccard Street Polokwane
101	LPT	Tel: 015 298 7000 Fax: 015 295 7010 Website: www.limpopo.gov.za	Provincial Treasury 46 Hans Van Rensburg Street, POLOKWANE and all Provincial Treasury Tender Advice Centres	Deposited in the bid box located outside a guard house at Ismini Towers, 46 Hans Van Rensburg Street, Polokwane
101A	TC/LP	Tel: 015 291 8400 Fax: 015 295 3310 Website: www.limpopo.gov.za	Provincial Treasury 56 – 58 Paul Kruger Street, POLOKWANE and all Provincial Treasury Tender Advice Centres	Deposited in the bid box located at the main entrance, Finance House Building, 56-58 Paul Kruger Street, Polokwane
102	PRDP	Tel: 015 287 6000 Fax: 015 295 3840 Website: www.limpopo.gov.za	Office of the Premier , 40 Hans van Rensburg Street, POLOKWANE and all SCM Advice Centres	Deposited in the bid box located at Mowaneng Building, 40 Hans van Rensburg Street, Polokwane
103	HEDP	Tel: 015 293 6000 Fax: 015 293 6211 Website: www.limpopo.gov.za	Department of Health , Office No. D3 Ground Floor, Old Capricorn Building, 18 College Street, POLOKWANE and all Provincial Treasury Tender Advice Centres	Deposited in the box located at Department of Health and Social Development, 18 College Street, Polokwane
104	LPEDT	Tel: 015 290 7600/1 Fax: 015 297 4494 Website: www.limpopo.gov.za	Department of Education , Corner 113 Biccard and 24 Excelsior Streets, POLOKWANE and all Provincial Treasury Tender Advice Centres	Deposited in the bid box located at the main entrance of corner 113 Biccard Street and Excelsior Street, Polokwane
105	PUDP	Tel: 015 295 1000 Fax: 015 295 1163 Website: www.limpopo.gov.za	Department of Transport and Community Safety , 40 Paul Kruger Street, POLOKWANE and all Provincial Treasury Tender Advice Centres	Deposited in the bid box located at 1 st Floor, Paul Kruger Wing, 40 Paul Kruger Street, Polokwane
106	COGHSTA	Tel: 015 294 2000 Fax: 015 295 4190 Website: www.limpopo.gov.za	Department of Co-Operative Governance, Human Settlements & Traditional Affairs , 28 Market Street, Office No. G 74, Ground Floor, Polokwane.	Deposited in the bid box located at Hensa Towers, Cnr of Rabe and Landdros Mare Streets, Polokwane
107	DSAC	Tel: 015 284 4000 Fax: 015 284 4514 Website: www.limpopo.gov.za	Department of Sport, Arts and Culture Olympic Towers, Corner Rabe and Biccard Street, POLOKWANE and all Provincial Treasury Tender Advice Centre	Deposited in the bid box located at the main entrance of Olympic Towers, Corner 21 Rabe and Biccard Street, Polokwane

108	LEDET	Tel: 015 293 8300 Fax: 015 293 8319 Website: www.limpopo.gov.za	Department of Economic Development, Environment & Tourism , 90 Bok Street, POLOKWANE and all SCM Advice Centres	Deposited in the bid box located at the main entrance of Evridiki Towers, 19 Biccard Street, Polokwane
109	LDPW & WODP	Tel: 015 284 7000 Fax: 015 284 7031 Website: www.limpopo.gov.za	Department of Public Works, Roads and Infrastructure ; Towers, 43 Church Street, POLOKWANE and all Provincial Treasury Tender Advice Centres	Deposited in the bid box located at Corner Blaawberg and River Street Ladanna Polokwane 0699 Private Bag X9490 Polokwane 0700
110	ACDP	Tel: 015 294 3000/30/60/90/20 Fax: 015 294 4506 Website: www.limpopo.gov.za	Department of Agriculture , Temo Towers, 69 Biccard Street, POLOKWANE and all Provincial Treasury Tender Advice Centres	Deposited in the bid box located at the main entrance of AgriVillage, 69 Biccard Street, Polokwane

ANNEXURE 2: ADDRESS LIST AND CONTACT DETAILS: LIMPOPO PUBLIC ENTITIES

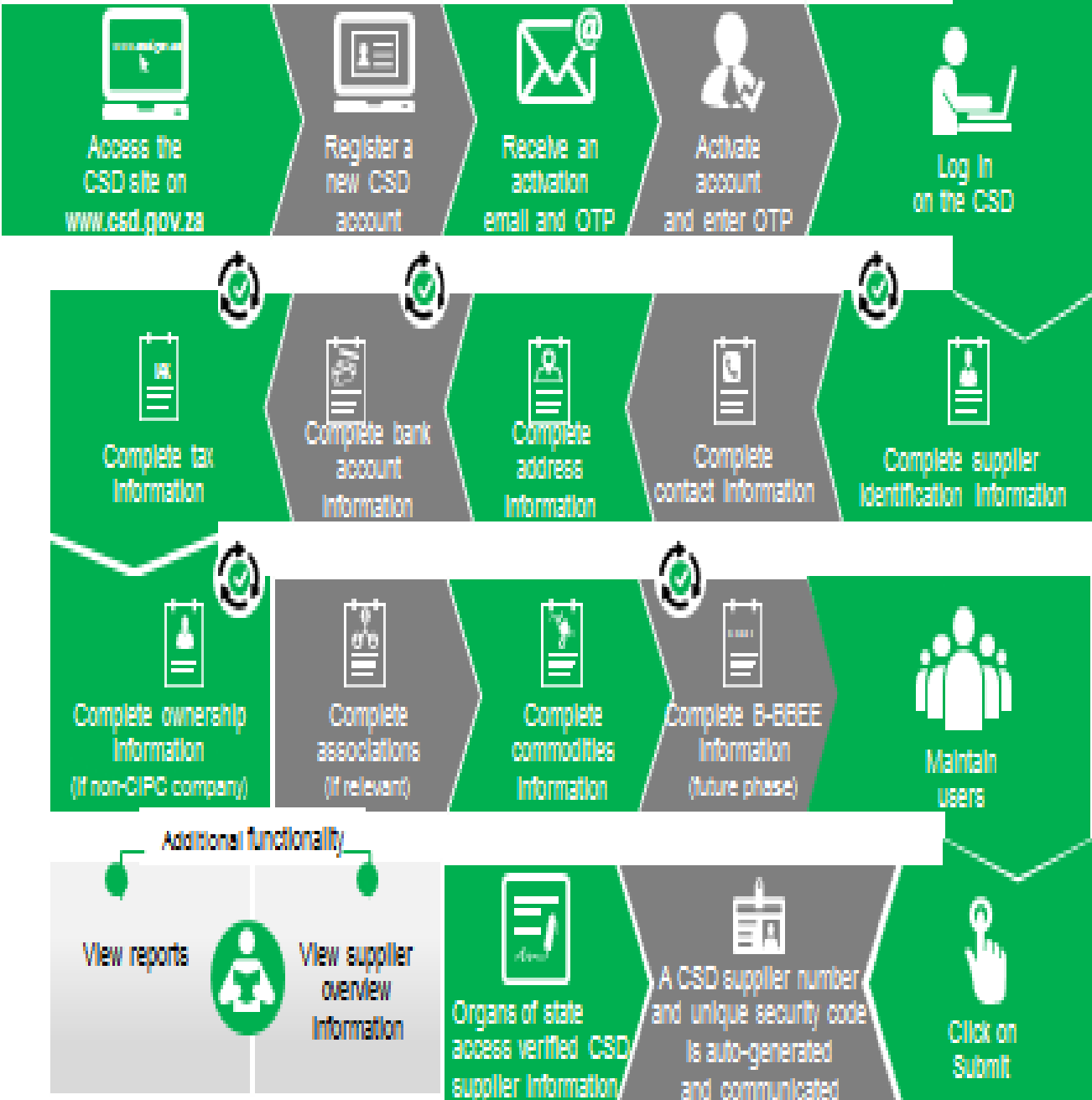
UNIQUE REF. NO.	BID DOCUMENT REFERENCE	CONTACT DETAILS	DOCUMENTS SOLD AT:	DOCUMENTS DEPOSITED AT
111	RFB: LIMP	Tel: 015 293 3621 Fax: 015 293 3660 Website: www.golimpopo.com	State Information Technology Agency (SITA) Limpopo Office, Moolman Building, 27 Market Street, POLOKWANE, 0699	The bid box is located at the Main Entrance of the Moolman Building, 27 Market Street, Polokwane
112	LTA	Tel: 015 293 3600 Fax: 015 293 3655 Website: www.golimpopo.com	Limpopo Tourism Agency , ERF 92/688, Portion 2 Southern Gateway, Ext 4, N1 Main Road, Polokwane 0699	The bid box is located in the offices ERF 92/688, Portion 2 Southern Gateway, Ext 4, N1 Main Road, Polokwane 0699
113	LGB	Tel: 015 295 5581 Fax: 015 295 3566 Website: www.lgb.org	Limpopo Gambling Board , 08 Hans van Rensburg Street, POLOKWANE, 0699	The bid box is located at the main entrance, 8 Hans van Rensburg Street, Polokwane, 0699
114	LEDA	Tel: 015 633 4700 Fax: 015 633 4854 Website: www.leda.co.za	Limpopo Economic Development Agency Enterprise Development Finance, Main Road Lebowaqomo	The bid box is located at the main entrance, Enterprise Development Finance, Main Road Lebowaqomo
115	RAL	Tel: 015 284 4600 Fax: 015 284 4701 Website: www.ral.co.za	Road Agency Limpopo (RAL) , RAL Towers, 26 Rabe Street, POLOKWANE, 0700	The bid box located in the entrance foyer (ground floor) of RAL Towers, at 26 Rabe Street, Polokwane
116	GAAL	Tel: 015 288 0122 Fax: 015 288 0346 Website: www.gaal.co.za	Gateway Airports Authority Limited , N1 Road to Louis Trichardt, Army Base, POLOKWANE International Airport, Polokwane, 0700	The bid box is located in the main entrance, the ground floor of the administration building, Polokwane International Airport, Army Base
117	VIVET	Tel: 015 963 3156 Fax: 015 963 3154 Website: www.vhembecollege.edu.za	Vhembe TVET College , Central Office, Site No 203 SIBASA 0970	Vhembe TVET College , Central Office, Site No 203 SIBASA 0970
118	WTVET	Tel: 015 491 8581/8602 Fax: 015 491 8579 Website: www.procurement@waterbergcollege.co.za	Waterberg FET College , Central Office, 36 Hooze Street, Mokopane, 0600	Waterberg FET College , Central Office, 36 Hooze Street, Mokopane, Private Bag x 2449, Mokopane 0600
119	GNT	Tel. 015 291 2641 Fax. 015 291 2648	No. 130a Marshall Street, Polokwane.0700	Great North Transport No. 130 Marshall Street, Polokwane.0700
120	MT	Tel. 015 2907715/7772	Mvula Trust 25 Rhodesdrift Street, Rhodesdrift Office Park, Bendor Ext 30, Polokwane	Mvula Trust 25 Rhodesdrift Street, Rhodesdrift Office Park, Bendor Ext 30, Polokwane
121	CCTVET	Tel.015 230 1800 Fax. 015 291 2767	Capricorn College for TVET 16 Market Street, Polokwane	Private Bag Bag X9674 Polokwane0700
122	IDT	Tel: 015 295 0000 Fax: 015 295 6559	Independent Development Trust	Independent Development Trust

			22 Hans van Rensburg Street, Polokwane, 0700	P.O.Box 55386 Polokwane 0700
123	DBSA	scmqueries@dbsa.org	Development Bank of Southern Africa Welcome Centre 1258 Lever Road Midrand	Development Bank of Southern Africa Welcome Centre 1258 Lever Road Midrand
124	MMSEZ	www.mmsez.co.za	Makhado Musina Special Economic Zone 93 Biccard Street, Polokwane, 0699	Makhado Musina Special Economic Zone 93 Biccard Street, Polokwane, 0699

ANNEXURE 3: ADDRESS LIST AND CONTACT DETAILS: PROVINCIAL TREASURY SCM CLIENT SUPPORT CENTRES
(CSD registration, assistance with SBD forms completion, and copies of the Provincial Tender Bulletin can be accessed from the following Limpopo Provincial Treasury District Centers):

PROVINCIAL TREASURY SUPPLY CHAIN MANAGEMENT CLIENT SUPPORT CENTRES	
<p>HEAD OFFICE</p> <p>SCM CLIENT SUPPORT 56 – 58 Paul Kruger Street POLOKWANE Private Bag x9494 POLOKWANE, 0700 Tel No. (015) 291 8400</p> <p>Contact: Ms. L. D. Msimeki @ Tel: 015 291 8755</p>	<p>Capricorn SCM Client Support Centre</p> <p>Limpopo Provincial Treasury 56-58 Paul Kruger Street Private Bag x9494 POLOKWANE, 0700 Tel No. (015) 291 8400</p> <p>Contact Person: Ms. Rasilingwana M</p>
<p>Vhembe SCM Client Support Centre</p> <p>Limpopo Provincial Treasury Government Building Complex BLOCK E GROUND FLOOR THOHOYANDOU, VENDA Tel: (015) 962 1752 Fax: (015) 962 1282</p> <p>Contact Person: Ms. A Manena</p>	<p>Mopani SCM Client Support Centre</p> <p>Limpopo Provincial Treasury Private Bag X 1973 GIYANI, 0826 Tel: (015) 812 0149 Fax: 086 219 7905</p> <p>Contact Person: Mr. W.R Khosa</p>
<p>Waterberg SCM Client Support Centre</p> <p>Limpopo Provincial Treasury 98 Nelson Mandela Street Decimale Building MODIMOLLE Tel: (014) 717 5837 Fax: (014) 717 5670</p> <p>Contact Person: Ms. R Moloi</p>	<p>Sekhukhune SCM Client Support Centre</p> <p>Limpopo Provincial Treasury Lefa Centre, Schoonoord Road JANE FURSE Tel: (013) 265 1344 Fax: (013) 265 1354</p> <p>Contact Person: Mr. M. S. Sehale</p>

Supplier Self-Registration Process



⌚ Auto verification of supplier information with SARS, GIPC etc